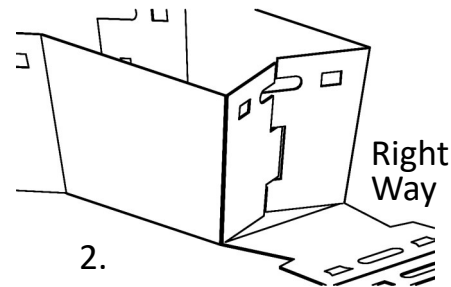
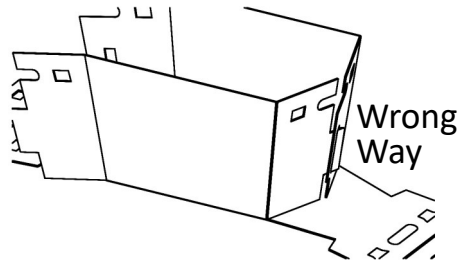
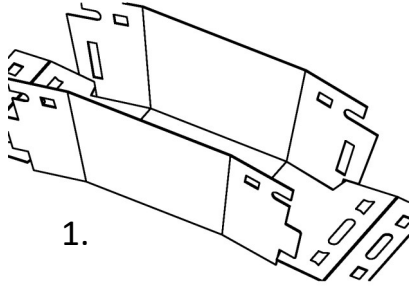
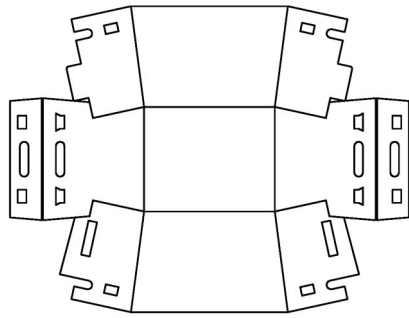
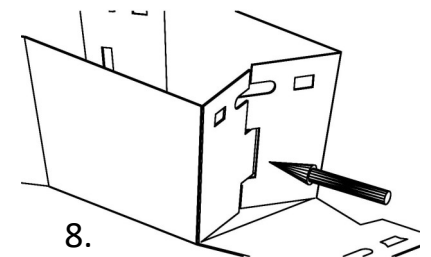
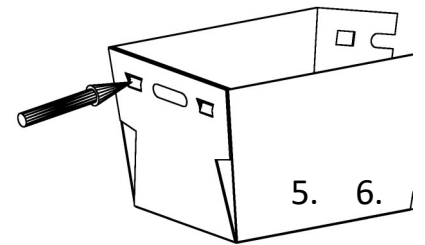
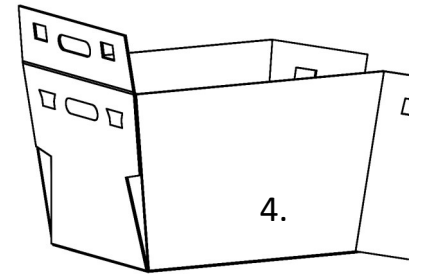
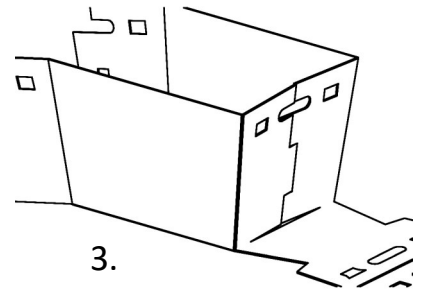


Instructions for Tote Bin Assembly

Assembly

1. Raise side panels with attached flaps.
2. Fold side flaps into the bin, point tab to slot and insert.
3. Pull back inserted flaps to bin side to interlock.
4. Fold up long side panel.
5. Fold down the top panel to inside over flaps.
6. Hold panels tight from inside, push snap fits in thru slots.



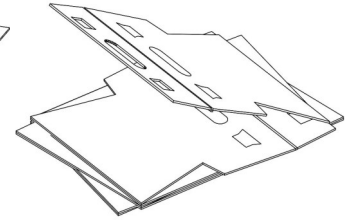
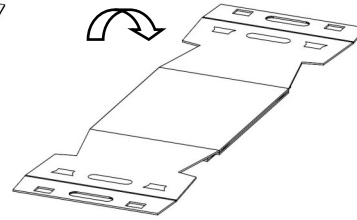
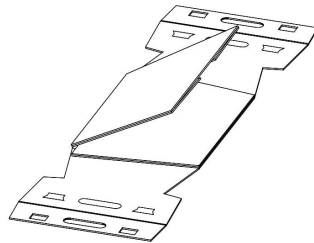
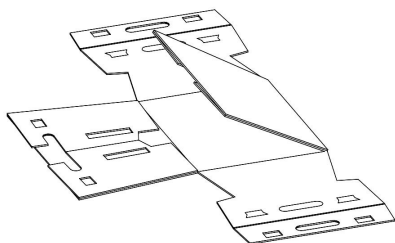
Disassembly

7. Push all snap fits back out.
 8. Push both flaps inward to disengage.
- DO NOT tear flaps apart to disassemble.

Web: www.ReusePac.com

Email: info@ReusePac.com

Instructions for Tote Bin Folding to Compact Size



1. Fold two attached flaps onto side panels.
2. Fold one side panel with folded flaps onto the bottom panel.

3. Fold the opposite side panel with folded flaps onto the side panel.

4. Flip the entire pack.

5. Fold over one long side panel onto bottom panel.
6. Fold over the other long side panel.

Made in China