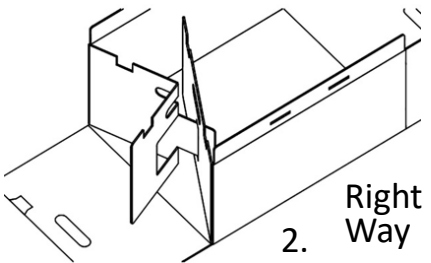
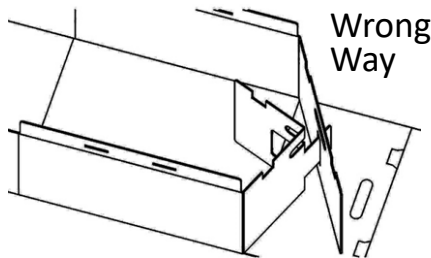
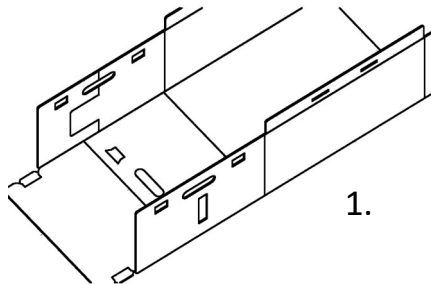
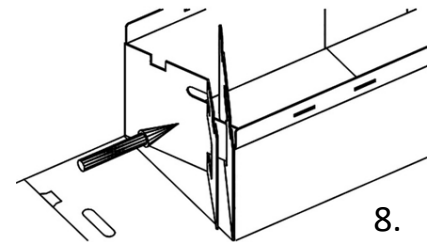
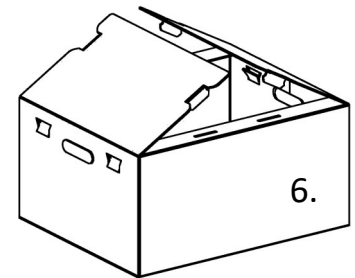
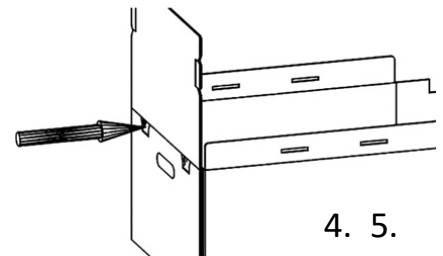
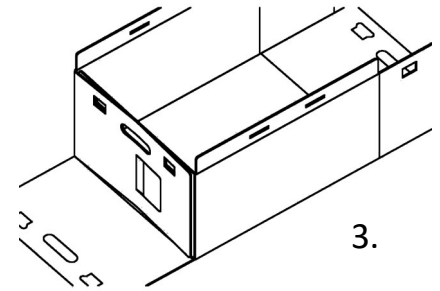


Instructions for Box Assembly

Assembly

1. Raise side panels with attached two flaps.
2. Fold flaps into the box, point tab to slot and insert.
3. Pull back inserted flaps to box side to interlock.
4. Fold up the long side panel.
5. Hold flaps tight from inside, push snap fits in thru slots.
6. Fold down top edges, insert lid tabs into respective slots.



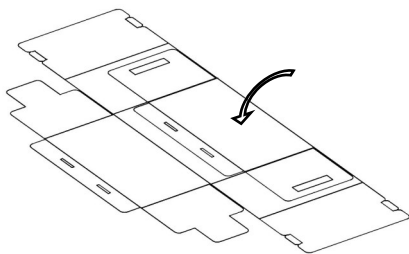
Disassembly

7. Push all snap fits back out.
8. Push both flaps inward to disengage.

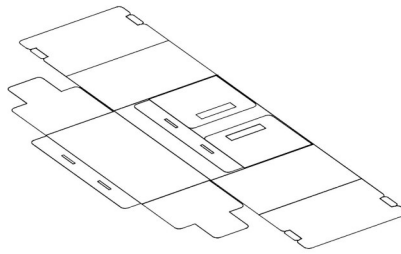
DO NOT tear flaps apart to disassemble.

Web: www.ReusePac.com
Email: Info@ReusePac.com

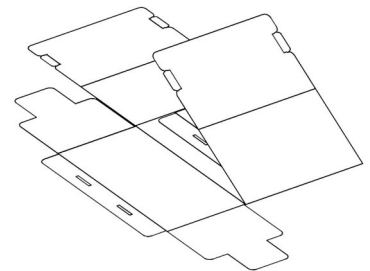
Instructions for Box Collapse Folding to Compact Size



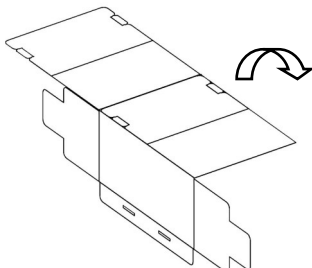
1. Fold over one side panel with two flaps onto the bottom panel.



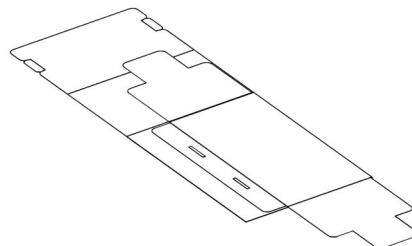
2. Fold over two flaps onto the side panel.



3. Fold over one long side panel down toward the middle.

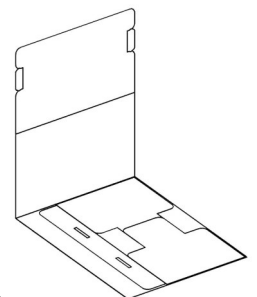


4. Flip the entire set.



5. Fold over the other side panel with two flaps onto the bottom panel.

6. Fold over two flaps. Fold over other long side panels.



Made in China