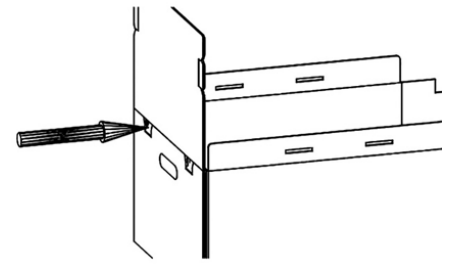
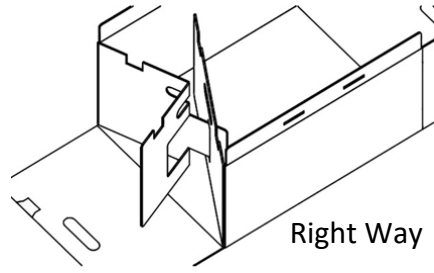
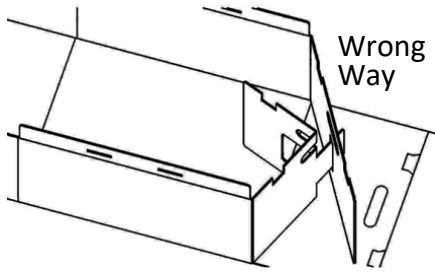


Instructions for Box & Tote Bin Assembly

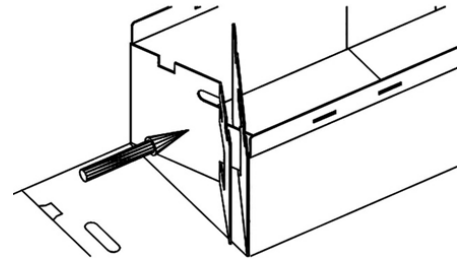


Assembly

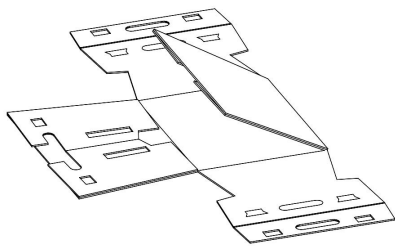
1. Push flaps inside the box, point tab to slot and insert. 2. Pull back inserted flaps to box side to interlock. 3. Fold up long side panel. (Tote bin: Fold down top flap)
4. Hold flaps tight from inside, push snap fit in through slots. 5. Insert tabs into respective slots.

Disassembly

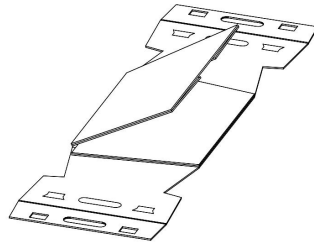
1. Push snap fit back out. 2. Push both flaps inwards to disengage. Do NOT tear apart flaps to disassemble.



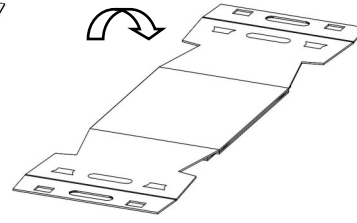
Instructions for Tote Bin Folding to Compact Size



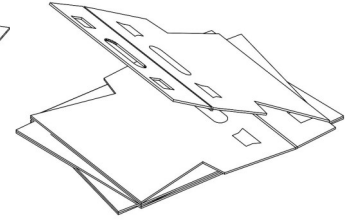
1. Fold two flaps onto side panel. 2. Fold side panel and flaps onto bottom panel.



3. Fold opposite side panel and flaps onto the side panel.

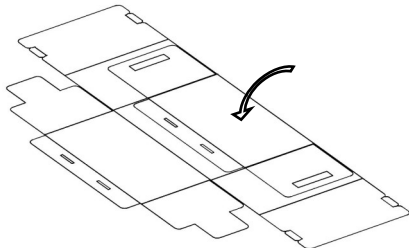


4. Flip over the entire pack.

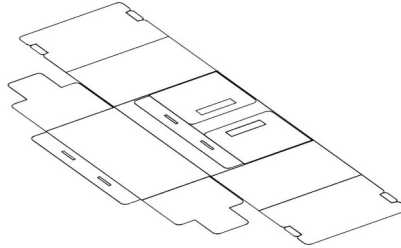


5. Fold over long side panel onto bottom panel. 6. Fold over other long side panel.

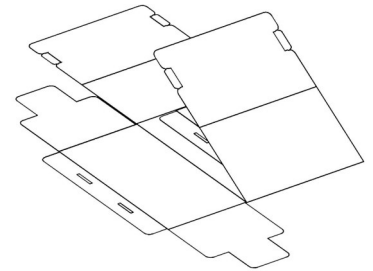
Instructions for Box Collapse Folding to Compact Size



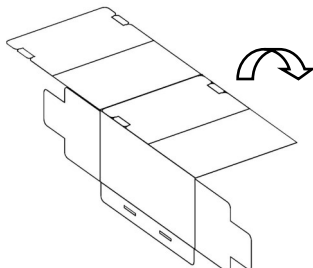
1. Fold over one side panel with two flaps onto the bottom panel.



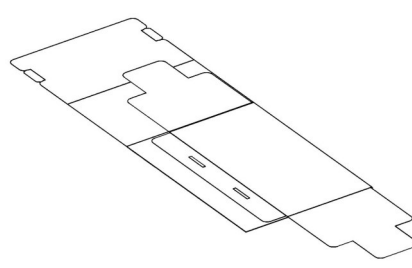
2. Fold over two flaps onto the side panel.



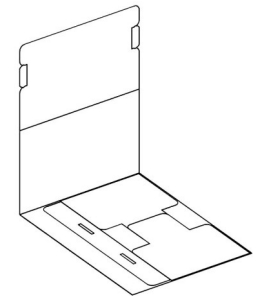
3. Fold over long side panels.



4. Flip over the entire set.



5. Fold over the other side panel with two flaps onto the bottom panel.



6. Fold over two flaps. Fold over other long side panels.